

THE ANATOMY OF A CUSTOM LANYARD

Understanding the parts that make up these popular accessories



Safety Breakaway

These plastic clasps are an optional feature. They allow the lanyard to come apart under pressure, preventing strangulation. They're particularly popular in schools and factories.



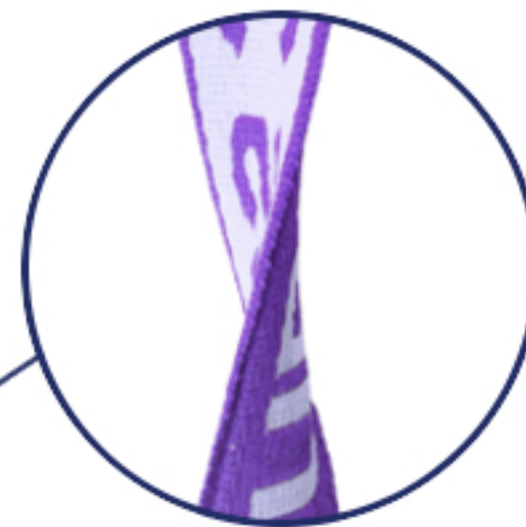
Imprint Method

This refers to the way your logo or text is added to the lanyard. In this example, the imagery is woven into the fabric for a classic lanyard look. We also offer dye-sublimation and screen printing.



Material Type

OK, so maybe this one is obvious: the material type refers to what the lanyard itself is made of. We offer a number of different materials, including polyester, vinyl, recycled PET and even bamboo!



Finishing Option

A finishing option is essentially what binds the lanyard together. The one shown at left is a nickel-plated steel crimp. Other popular finishing options include a plastic bead and a stitched closure.



End Fitting

The end fitting is the little piece at the end of your lanyard that you'll use to display an ID badge or badge holder. This is a bulldog clip; we also offer swivel hooks, wide plastic hooks and more.

